



MDU

WESLEYAN

*we are all about you*

# TTA Pack

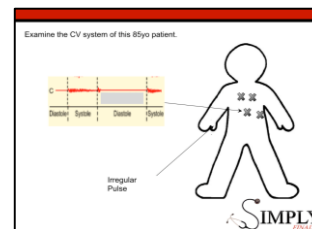
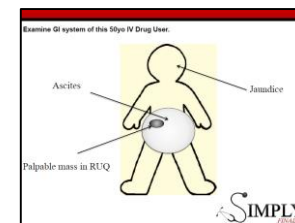
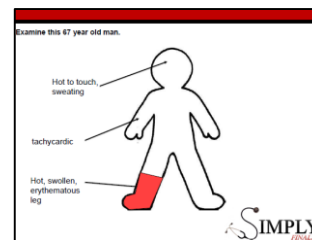
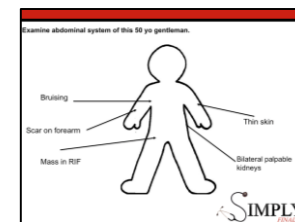
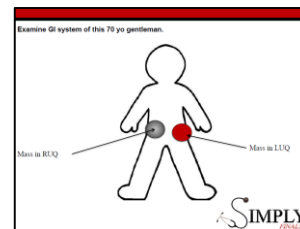
Week 4



**SIMPLY**  
*FINALS*

# What's been covered so far...

- Antibiotics
- BBN/Explaining
- Blood Interpretation
- Blood transfusion
- Cardiology
- ECGs
- Gastroenterology and Liver Disease
- Haematology
- Hypertension and Heart Failure Meds
- Loss of Consciousness
- MDT/Complex discharge
- Prescribing
- Renal
- SBAR/Presenting
- Sepsis

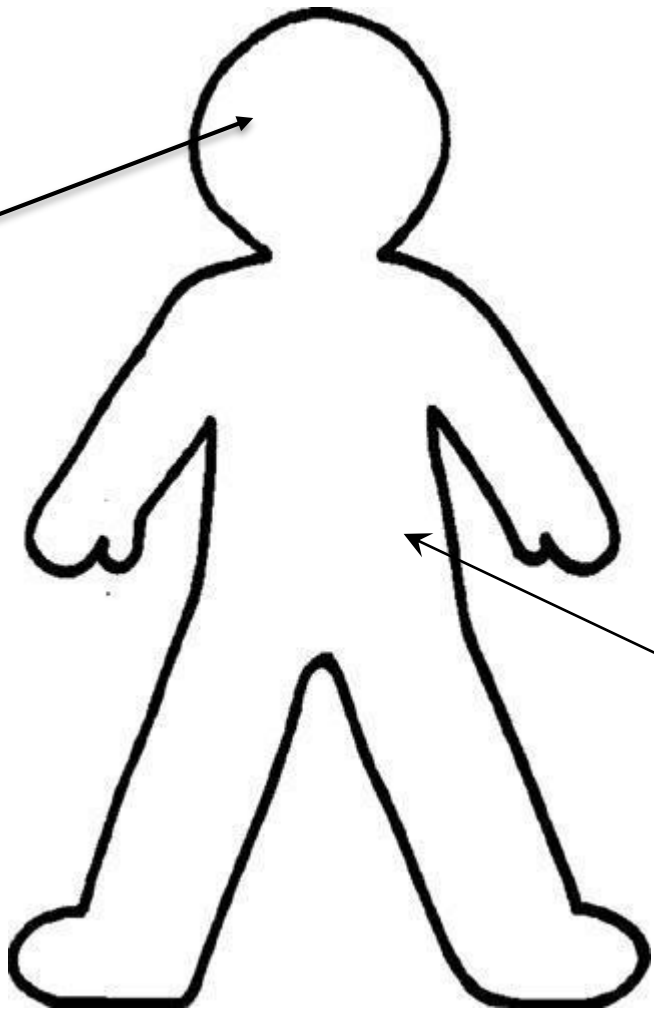


# This week's TTAs

- Check the blood test results of three patients – are further investigations warranted?
- Do a lying-standing blood pressure (properly)

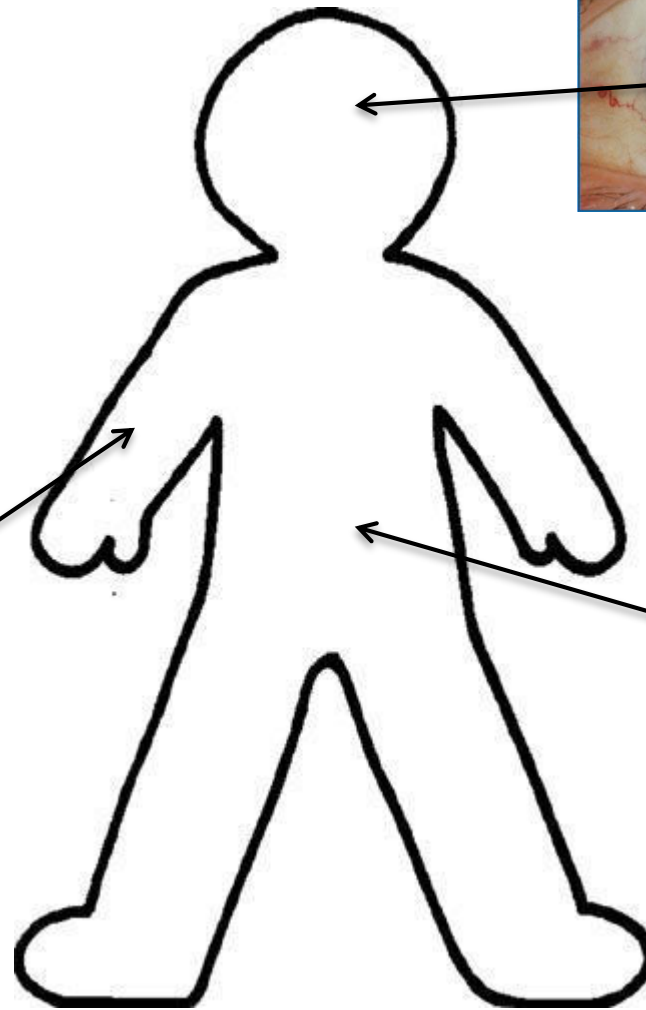
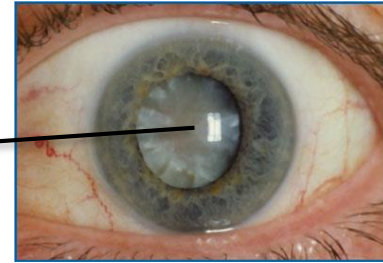


Examine the abdominal system of this 27 year old man



4cm  
splenomegaly

55yo male  
Long Hx of eczema and  
Rheumatoid Arthritis



# Regular TTAs

Examine and take focussed history of each system >2 times a week

- With feedback (exam-like practice)
  - **Peer-peer** marking (with mark schemes)
  - Present findings and offer management plan.
- 
- Keep an eye on website for up to date recommended resources, [www.simplyrevision.org.uk](http://www.simplyrevision.org.uk)



Next Week, Wednesday 3<sup>rd</sup> February

IV Fluids

Blood Test Interpretation (Part 2)

And...



*With Dr John Flood*

Like 'Simply Finals' on Facebook



[www.simplyrevision.org.uk](http://www.simplyrevision.org.uk)

43 Days to Go!

*See you in the Griff-Inn!!*

